

*Schools and Institutions*

TEMPLE FOUNT AT THE YAMANAKA GALLERIES

the celebrated Portland Vase in the British Museum, and are expressive of the height of Greek art. This collection is of immense rarity and beauty.

IN mentioning the address of Miss Swift, of whose house-decorating we wrote in the November issue of the INTERNATIONAL STUDIO, we inadvertently gave the wrong street. Miss Swift's Studios are "The Colonia," 20 West 33d St., N. Y. City.

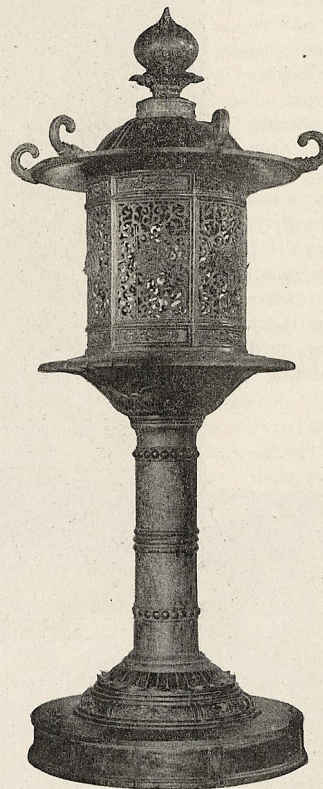
**S**CHOOLS AND INSTITUTIONS.

THE ART INSTITUTE OF CHICAGO will show the annual exhibition of the Western Society of Artists from December 6 to December 25.

WORD comes to hand that the School of Illustration which was founded some years ago in Chicago, by the late Frank Holme, will be continued under the management of Mrs. Holme. She, indeed, has had charge of it since Mr. Holme was forced by his failing health to seek a less rigorous climate than Chicago's, four years ago. Frank Holme was popular and well regarded. He was one of the first to start a formal school of illustration, where the

students should be taught to adapt their work to the practical needs of reproduction.

THE Director of Fine Arts of the Carnegie Institute has announced the following names of painters selected on three hundred ballots received from contributors to the International Exhibition, to serve on the jury of award this year: Edward W. Redfield, Philadelphia; J. J. Enneking, Boston; Edmond Aman-Jean, Paris; Alexander Roche, Edinburgh; Frank W. Benson, Boston; Wilton Lockwood, Boston; Ben Foster, New York; Childe

TEMPLE LANTERN  
AT THE YAMANAKA GALLERIES

XLV