

MONUMENTI ANTICHI - VOL. XXIX

L. M. UGOLINI - LA PANIGHINA TAV. II.



Fig. 1 - (Alt. cm. 18)



Fig. 2 - (Alt. cm. 11)

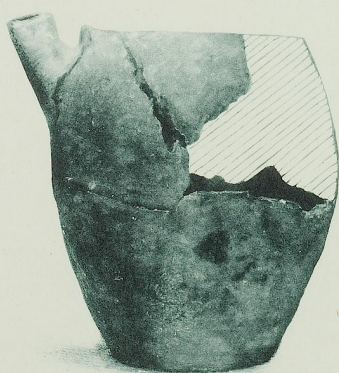


Fig. 3 - (Alt. cm. 23)



Fig. 4 - (Alt. cm. 21)

E. Calzone - Roma.