

*Frank Brangwyn's Stained Glass Designs*

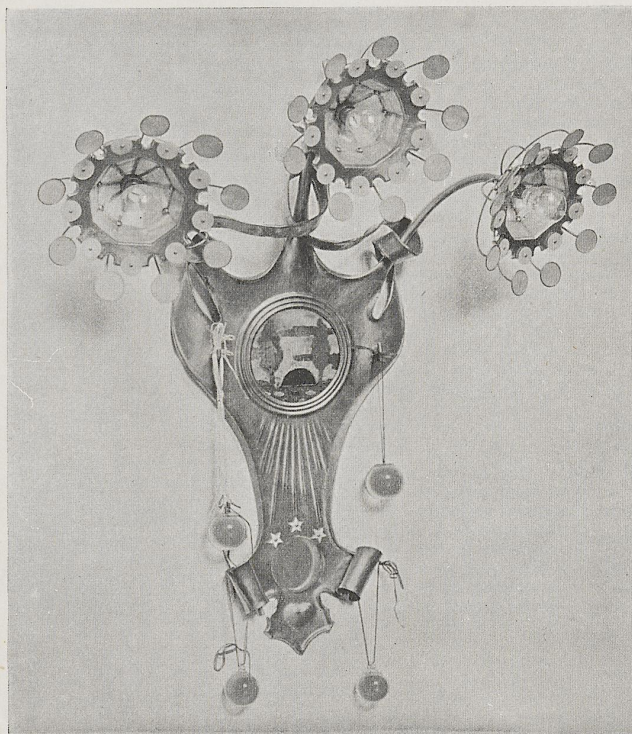
the electric lights above it. These are encased in shades, as it were, formed of thin sheets of mother-o'-pearl, while the discs which surround them are formed of the same material, giving a peculiarly flower-like and iridescent effect. The metal portion of the bracket is of copper, heavily gilt, while it is supported by two gilt hooks, from which hang, on silken cords, two plain spheres of crystal. A pair of these lights were made by Mr. Frampton for a house in Berkeley Square, and form, perhaps, as successful a treatment of the electric-light fitting problem as can be met with. Mr. Frampton has made use of his latest piece of enamel work in connection with his great statue of the Queen, to which reference has been made. Her Majesty holds in her left hand an orb surmounted by a figure of St. George. The orb itself is to be of some species of blue stone or crystal. The figure surmounting it carries in one hand a banner, while the other rests upon a shield which, by the aid of its enamel decoration, introduces a touch of strong colour just where the artist feels that it is helpful.

**S**TAINED GLASS DESIGNS BY FRANK BRANGWYN.

It can certainly not be said of Mr. Brangwyn that he has any tendency to limit his artistic practice to any one direction, or that he is inclined to confine himself to one class of work. Monotony in methods or in forms of expression is emphatically not to be suggested as a weak point in his art. He is skilled in so many ways of dealing with æsthetic problems that he can choose from among them whatever manner of working is most likely to give him the best result, and can follow it out with confidence in his ability to turn it to thoroughly good account. There is evidence enough of his versatility in the many successes he has made in very different branches of artistic effort. He is a picture painter of real originality and exceptional strength, a colourist who delights in rich harmonies and daring combinations, and a manipulator who is absolutely free from any fear of his materials; he is

a close and earnest student of nature, and is equally happy in dealing with landscapes, marine subjects, or the human figure; and as a decorator and designer he is almost alone in his fertility of imagination and ingenious adaptability. This all-round capacity makes him of great interest to all people who follow attentively the movements of the art world, for he is constantly appearing in a fresh light, and has a way of surprising even his closest admirers by sudden excursions into new paths.

Latterly he has been giving more attention to decoration than to picture painting, and a single canvas, exhibited recently at Mr. McLean's gallery, represents practically the whole of the pictorial work that he has produced this spring. But this temporary abstention from exhibiting does not mean that he has not been busy. On the



ENAMELLED ELECTRIC LIGHT BRACKET

BY G. J. FRAMPTON, A.R.A.