

Recent Designs in Domestic Architecture

feverishly. Presently the crowd spotted me, and caught on, laughing; this caused the two angry men to look up, and seeing me at it again un-baffled, one of them again placed himself in front of the camel's head. In spite of this and the excitement around me, I managed to get the whole squatting body of the beast. But the owner's rage was at fever heat when my merry audience called to him that I had potted his camel. He jumped up, hoisted the loads on to its hump, untied its folded knees, and prodded it to get up and run.

They ran—but so did I, drawing all the way while running, with a torrent of laughing, cheering Arabs beside and behind me. Oh such fun! I chased them right up the hill, my pencil flying at work, head bobbing up and down—dodging squatting people, and laughing with the joy of the sport as I ran, until my game vanished round the corner up the hill. But I had won my point and got my camel's head, midst cheers and roars of laughter from the crowd of onlookers who had been intently watching my exploits.

The owner's friend who had been so furious before, came behind me and said—"Mizziaan! mizziaan!" which means "splendid."

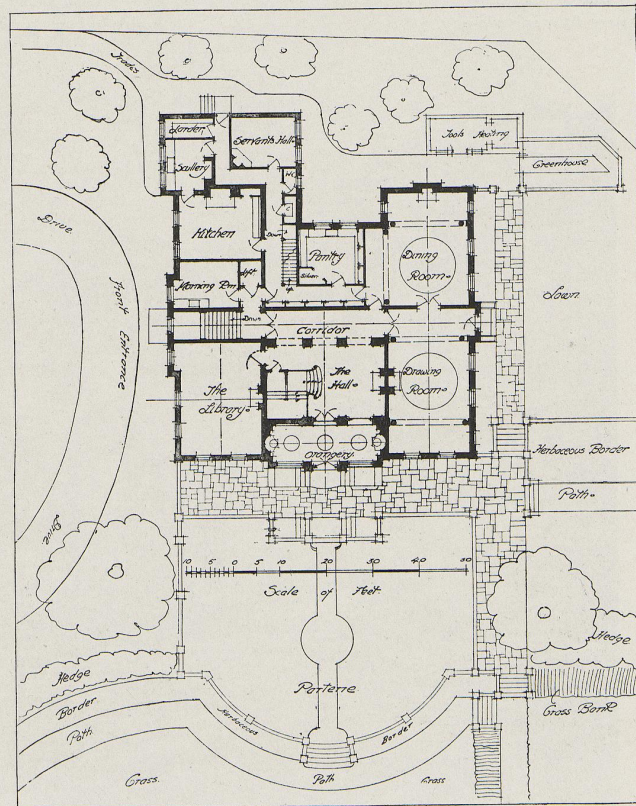
Oh it is an unending feast of form, colour and light. If only one had months here and a big studio to attack big canvases, and gradually entice models to pose for one, as well as doing the moving people on the marketplace! I have already succeeded in persuading several splendid types to give short sittings.

I had the opportunity the other day to draw an escaped slave in the tribunal of the French Embassy. If only one could succeed in banishing their fears—what an unending field of work there is amongst these beautiful, dignified people!

E. HILDA RIX.

RECENT DESIGNS IN DOMESTIC ARCHITECTURE.

TEMPLE Hill House, of which views and a plan are here given, has been recently built on a fine site adjoining the West Heath, Hampstead, from the plans of Mr. C. H. B. Quennell, F.R.I.B.A., for A. M. Mirrielees, Esq. The site, notwithstanding its great charm, presented considerable difficulties. First, a very appreciable difference of level had to be overcome, the fall being diagonally from the dining-room across to the library. The best view was to the north-west across Hampstead Heath and so away from the sun, but by placing the drawing-room on the south-western angle a sunny room was ensured and at the same time it was possible to enjoy the view. The library on



PLAN OF TEMPLEHILL HOUSE, HAMPSTEAD
C. H. B. QUENNEL, F.R.I.B.A., ARCHITECT

(For perspective views of this house see next two pages)