

## DESIGNERS OF TAPESTRIES, EMBROIDERIES AND TEXTILE FABRICS



HAND-WOVEN SCREEN DESIGNED AND EXECUTED BY WANDA BIBROWICZ

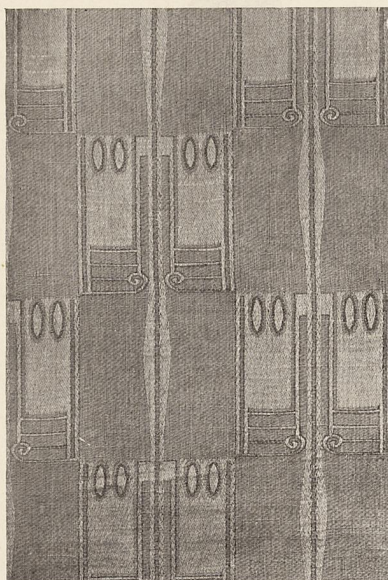
BEHRENS, PROF. PETER. *See pages 1 and 2.*

BIBROWICZ, FRÄULEIN WANDA, *Royal School of Art, Breslau, Silesia.*

Fräulein Bibrowicz is an assistant to Professor Max Wislicenus, and executes his designs for wall-hangings, one of which is reproduced on page 97. The small illustration on this page is an example of her work in hand-loom weaving. She teaches art-weaving in the Royal School of Art at Breslau, and has also carried out a number of her own designs in leather.

BURLINGHAM, MISS FREDa, "*Avaion*," *Sollersholt, Letchworth, Herts.*

Miss Burlingham designs cretonnes and tapestries and executes embroidery, jewelry and shagreen from her own designs. Her work is usually to be seen at the Arts and Crafts Society's Exhibition, and she also showed some of her embroidery and jewelry at the Dress Designers' Exhibition. The cretonne "*Honeysuckle and Harebells*," illustrated here, was designed for Messrs. Story & Co.



TAPESTRY DESIGNED BY PROF. PETER BEHRENS



CRETONNE DESIGNED BY FREDa BURLINGHAM, EXECUTED BY STORY AND CO.